

SHARP[®]

2016 PRODUCT LINE-UP

INDUSTRIAL STRENGTH

LCDs

SharpSMA.com/IndustrialLCD

IT'S NOT A ONE-SIZE-FITS-ALL WORLD

When it comes to finding the perfect display, it's all about options.

At Sharp, we continue working hard to expand our Industrial Application (IA) display line-up to provide solutions for the widest possible variety of requirements.

Our IA LCDs range from 3.5-inch to 23.5-inch (diagonal). From stock IA panels to premium out-of-the box parts to our budget-friendly Value IA LCDs, we aim to meet both your specification and budgetary needs.



Standard IA

PICK YOUR PERFECT DISPLAY

Our stock IA parts offer a range of features and sizes that enable you to develop products that shine in demanding environments. They also provide the perfect building block for enhanced, high-performance solutions.

IA + VAP

DIAL-IN YOUR PREMIUM SOLUTION

Sharp works with a network of Value-Added Providers to develop enhanced solutions for your product's requirements - all built on Sharp Industrial Application LCDs. Let's talk about your needs for multi-touch PCAP, High Brightness displays, and more.

Value IA

BUDGET-SENSITIVE PROJECT?

Integrate key features of Sharp's Industrial Strength LCDs into your designs with these right-priced panels. Available in many of the most popular diagonal sizes.

Automotive Grade IA

"ROAD READY" FOR *TRADITIONAL* IA PRODUCTS

Sharp Automotive panels are ideal for traditional IA solutions that require extreme viewability in high-ambient or direct light. They also hang tough with rugged shock and vibration specifications.

Performance Consumer

A NEW LEVEL OF "WOW" IN IA

High-performance consumer LCDs for smartphones and tablet computers are available for large-volume customers with product lines adapted to quick-turn life cycles. Contact your Sharp Representative to determine if your program is a fit.

INDUSTRIAL STRENGTH...

RESISTANCE TO **VIBRATION** **HIGH** BRIGHTNESS
HIGH CONTRAST

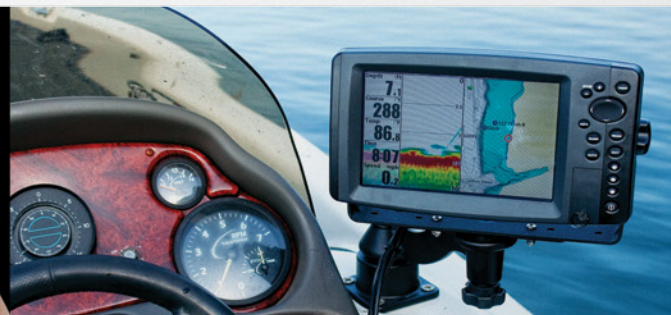
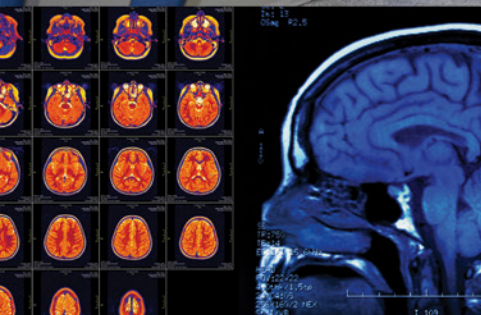
WIDE TEMPERATURE RANGE
WIDE VIEWING ANGLES

Your products have to stand up to the toughest environments. Sharp's line-up of Industrial Application (IA) displays deliver the specifications to meet the challenge...and then some.



ADVERTISING
ATM
AUTOMOTIVE
CLIMATE CONTROL
FACTORY AUTOMATION
GAMING/LOTTERY
HANDHELD DEVICES
HEALTH/FITNESS/SPORTS
HOME AUTOMATION
IN-FLIGHT ENTERTAINMENT

INDUSTRIAL CONTROLS
KIOSKS
MEDICAL DEVICES
MULTIMEDIA
POS TERMINALS
NAVIGATION/TRANSPORTATION
TEST AND MEASUREMENT
WEARABLE TECHNOLOGY
WHITE GOODS
...AND MORE!



...FOR ANY OCCASION

Small Diagonal LCDs

Panel Size (Diagonal)	Part Number	Resolution Features
3.5-inch	LQ035Q3DY01	QVGA PSV 600 Nits Portrait Mode
3.7-inch	LS037V7DW05	VGA QVGA ASV 4-Wire Resistive Touch Portrait Mode
3.7-inch	LS037V7DW06	VGA QVGA ASV Portrait Mode
4.0-inch	LQ040Y3DX80B	WVGA ISP Portrait Mode VALUE IA
4.2-inch	LQ042T5DZ13K	WQVGA ASV AUTOMOTIVE IA
4.3-inch	LQ043T1DG28	WQVGA 4-Wire Resistive Touch
4.3-inch	LQ043T1DG29	WQVGA
4.3-inch	LQ043Y1DX07	WVGA ASV Portrait Mode
4.3-inch	LQ043Y1DY01	WVGA ASV PSV Portrait Mode
5.0-inch	LQ050Y3DC02	WVGA VALUE IA
5.7-inch	LQ057Q3DC03A	QVGA
6.4-inch	LQ064V3DG06	VGA
6.5-inch	LQ065Y5DZ01A	WVGA ASV AUTOMOTIVE IA

Medium Diagonal LCDs

Panel Size (Diagonal)	Part Number	Resolution Features
7.0-inch	LQ070K1LX80	WXGA LVDS ASV Portrait Mode VALUE IA
7.0-inch	LQ070Y3DG3A	WVGA
7.0-inch	LQ070Y3DG3B	WVGA 4-Wire Resistive Touch

Medium Diagonal LCDs, *cont.*

Panel Size (Diagonal)	Part Number	Resolution Features
7.0-inch	LQ070Y3LG02	WVGA LVDS Extended Temp. Range
7.0-inch	LQ070Y3LG05*	WVGA LVDS VALUE IA
7.0-inch	LQ070Y3LG4A	WVGA LVDS
7.0-inch	LQ070Y3LW01	WVGA ASV LVDS
8.0-inch	LQ080Y5DZ03A*	WVGA ASV AUTOMOTIVE IA (645 Nits)
8.0-inch	LQ080Y3LW01	WVGA ASV LVDS Extended Temp. Range 650 Nits
8.4-inch	LQ084S3LG03*	SVGA LVDS
8.4-inch	LQ084V1DG43*	VGA
8.5-inch	LQ085Y3DW01	WVGA ASV
9.0-inch	LQ090Y3DG01*	WVGA VALUE IA

Large Diagonal LCDs

Panel Size (Diagonal)	Part Number	Resolution Features
10.1-inch	LQ101K1LY04	WXGA ASV LVDS
10.4-inch	LQ104S1DG2C*	SVGA Digital
10.4-inch	LQ104S1DG34*	SVGA Digital
10.4-inch	LQ104S1LG75*	SVGA LVDS HIGH BRIGHT (1000 Nits)
10.4-inch	LQ104S1LG81*	SVGA LVDS
10.4-inch	LQ104V1DG81*	VGA Digital
10.4-inch	LQ104V1LG81*	VGA LVDS

*Includes built-in LED Driver

Want more product details? Visit SharpSMA.com/IndustrialLCD.

Large Diagonal LCDs, *cont.*

Panel Size (Diagonal)	Part Number	Resolution Features
12.1-inch	LQ121K1LG52*	WXGA LVDS
12.1-inch	LQ121S1DG81*	SVGA Digital
12.1-inch	LQ121S1LG84*	SVGA LVDS
12.1-inch	LQ121S1LG86*	SVGA LVDS HIGH BRIGHT (1500 Nits)
12.1-inch	LQ121S1LG88*	SVGA LVDS VALUE IA
12.1-inch	LQ121X3LG02	XGA LVDS HIGH BRIGHT (1200 Nits)
15.0-inch	LQ150X1LG11*	XGA LVDS HIGH BRIGHT (600 Nits)
15.0-inch	LQ150X1LG91*	XGA LVDS
15.0-inch	LQ150X1LG96*	XGA LVDS HIGH BRIGHT (100 Nits)
15.0-inch	LQ150X1LW94*	XGA LVDS ASV
15.0-inch	LQ150X1LX95*	XGA LVDS ASV UL Certified
15.0-inch	LQ150X1LX96*	XGA ASV LVDS UL Certified HIGH BRIGHT (1000 Nits)
15.6-inch	LQ156M1LG21*	FHD Selectable 300/350/400/600 Nits
15.6-inch	LQ156M3LW01*	FHD ASV
15.6-inch	LQ156T3LW03*	HD ASV
18.5-inch	LQ185M3LW01*	FHD ASV LVDS Available Q1 2017
19.0-inch	LQ190E1LW52	SXGA ASV LVDS
19.0-inch	LQ190E1LX75T*	SXGA LVDS ASV UL Certified
20.1-inch	LQ201U1LW32*	UXGA ASV LVDS Color
23.1-inch	LQ231U1LW31*	UXGA ASV LVDS Monochrome

*Includes built-in LED Driver

LCD TECHNOLOGY LEADERSHIP

From high-resolution, energy-saving IGZO displays to Sharp's new Free Form Display, which enables a display in virtually any shape, Sharp continues its role as a display technology trailblazer. We pioneered the concept of Industrial Application (IA) LCDs, and continue to complement our rugged IA specifications with innovative Sharp technology advances.

Progressive Super View (PSV)

PSV enables direct sunlight viewability with brightness settings as low as 100 nits. Save power, decrease heat from the backlight, and enjoy images free of parallax or metallic appearance.

Advanced Super View (ASV)

Delivering 170° x 170° viewing angles, ASV leverages increased contrast to render consistent color and virtually washout-free images, even in dynamic and demanding industrial applications.

Memory LCD

This groundbreaking, ultra-low power Sharp LCD technology enables long battery life, high resolution, and lightweight design for wearables and other small-screen applications. Visit SharpMemoryLCD.com for more information.

Plus, other new innovations COMING SOON.

WHO'S BEHIND YOUR LCD?

- Global infrastructure
- Strength in manufacturing
- Optimized distribution model
- Sharp Fabs
- Experience in almost every industry
- Long product lifecycles
- U.S.-based Sales and Support
- Peace of mind

When you choose a technology partner, you are investing in more than just a part.

Sharp's global infrastructure enables long product lifecycles. Our warranties mean you can count on us every step of the way.

Plus, our deep engineering resources give you the boost you need to get to market quickly. Sharp technical support includes dedicated experts in your region who are ready for your call.

Our Industrial Application (IA) displays are backed with Industrial-Strength documentation:

- Incoming Inspection Standards (IIS)
- Full Product Specifications
- Reliability Test Reports
- CAD drawings
- UL Material and Components Parts Lists



MAKE IT SHARP.

LET'S FIND YOUR PERFECT **LCD SOLUTION**

For more information:

- Contact your **Sharp Representative** or **Distributor**
- Visit **www.SharpSMA.com**
- Email **IndustrialLCD@SharpSEC.com**

SHARP[®]

HEADQUARTERS

5700 NW Pacific Rim Blvd.
Camas, WA 98607
Phone: (1) 360-834-2500
Fax: (1) 360-834-8903

WESTERN REGION

1980 Zanker Rd.
San Jose, CA 95112
Phone: (1) 408-436-4900
Fax: (1) 408-436-0924

4 Hutton Center, Ste. 800
Santa Ana, CA 92707
Phone: (1) 657-235-3779
Fax: (1) 657-235-3780

CENTRAL REGION

85 W. Algonquin Rd., Ste. 280
Arlington Heights, IL 60005
Phone: (1) 847-258-2750
Fax: (1) 847-439-2479

One Towne Square, Ste. 200
Southfield, MI 48076
Phone: (1) 248-663-5720
Fax: (1) 248-663-5750

Braker Pointe, Bldg. #1
10801 N. Mo-Pac Expy., Ste. 370
Austin, TX 78759
Phone: (1) 512-795-9395
Fax: (1) 512-795-9685

EASTERN REGION

285 Billerica Rd., Ste. 202
Chelmsford, MA 01824
Phone: (1) 360-834-2500
Fax: (1) 978-256-2237

8000 Regency Parkway, Ste. 280
Cary, NC 27518
Phone: (1) 919-460-0695
Fax: (1) 919-460-0795



TALK TO US.