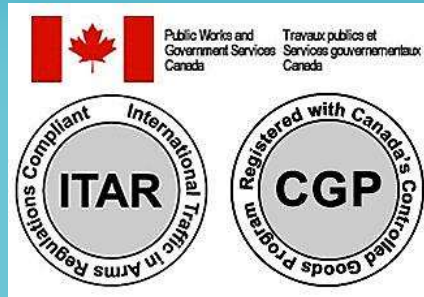




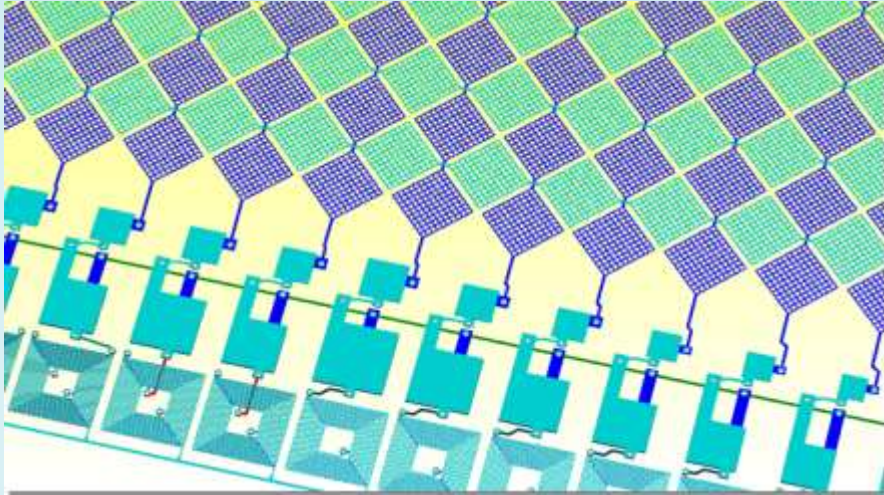
Innovative

Solutions in Touch Screen Technology



Next Gen PCAP

Will be Here Soon!



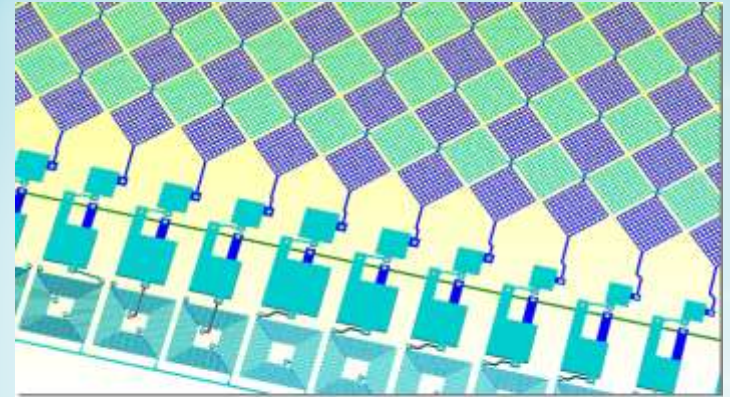
What is it?

It's called Multiplexed Projected Capacitive (MPC)

Instead of operating on one radio frequency, It uses a band of many frequencies over a common buss track.

Each sensor channel is connected to the buss track through a resonant filter constructed on the sensor

which only
allows a specific
frequency to
pass through to
each channel.



Screen Printed Resonant Filter Circuits

Each channel operates on a different frequency and all frequencies can be sent over a single wire.

**Why would
you want it?**

To start, here's the list:

- One controller works with any sensor size.
- No more controller programming to handle specific sensor channels and orientation.
- No more multi-trace large ribbon cable on the sensor
 - only 3 wires are required.

There's more...

- No more short sensor cable to avoid cable cross-talk. Controller and sensor can be far apart.
- Much more tolerant to radio interference since it works with many frequencies rather than just one.
- Cost and production method are similar to conventional PCAP.